

CERTIFICATE OF LOCATION OF GOVERNMENT CORNER

NORTH QUARTER Corner of Section 2, Township 107N, Range 39W

5th Principal Meridian, State of Minnesota, County of MURRAY

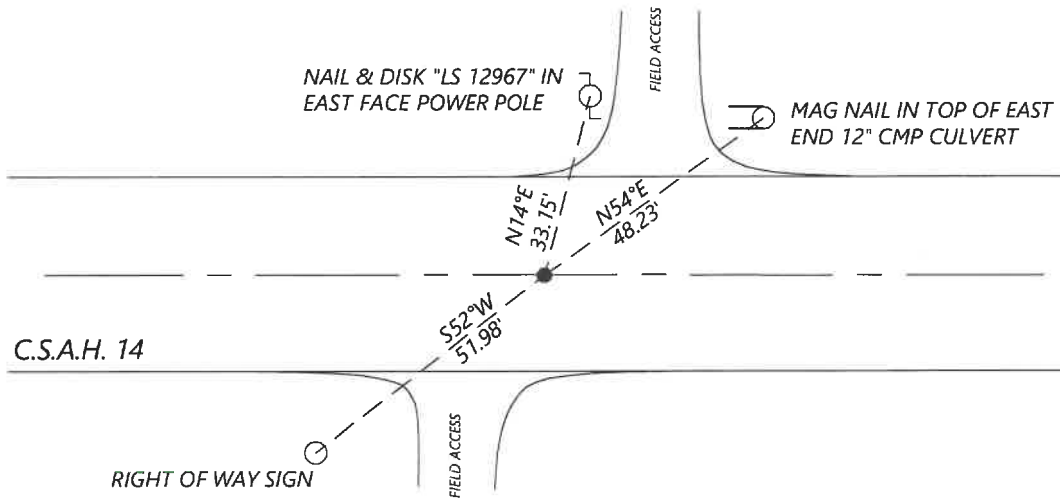
At the corner location shown on the sketch:

On 8/27/2020 found a 6" X 6" CONCRETE MONUMENT WITH NO. 4 REBAR WITHOUT CAP ON NORTHWEST EDGE
DATE DOWN 0.4FT

left monument as found lowered monument removed monument (explain)

On _____ placed a _____
DATE

SKETCH OF REFERENCE TIES



N.T.S.

Statement of evidence for this corner location is on back of this page.

I hereby certify that this document was researched and prepared by me or under my direct supervision and that I am a licensed Land Surveyor under the laws of the State of Minnesota.

Signature [Handwritten Signature]

Date 6/16/2021 License No. 45874

Title:

- Land Surveyor Professional Engineer
- County Surveyor County Engineer

OFFICE OF THE COUNTY RECORDER

County of Murray

I hereby certify that this document was filed in the Co.

Recorder's office at _____ M. on the _____ day of _____ A.D. 20

County Recorder Karen Brown

by JUN 22 2021, Deputy

DOCUMENT NO. _____

Statement of Evidence:

North Quarter Corner of Section 2, Township 107 North, Range 39 West, 5th Principal Meridian, Murray County, Minnesota.

No GLO Notes.

1940 *Survey Record for Section 2 shows a concrete stone at the corner.*

Tack in corner post NW 42.4ft

Tack in corner post N 33.7ft

1980 *September, Corner Certificate filed by LS 12967 shows that a concrete monument was found and a $\frac{1}{2}$ " rebar with cap #12967 was set beside the monument.*

2013 *August, Highway Department data shows that a $\frac{1}{2}$ " rebar was found.*

Coordinates: N: 195195.40 E: 572014.31

2020 *September, Westwood Professional Services searched and found a concrete monument with a No. 4 rebar on northwest edge. I held the concrete monument position.*

Coordinates: N: 195195.31 E: 572015.50

Analysis of the recovered data, field evidence and survey measurements, indicates that the monument found is the correct perpetuation of this corner. For additional information concerning this corner please contact Westwood Professional Services.